

State of Wyoming Corner Record

(In compliance with the **CORNER PERPETUATION AND FIELD ACT**, Wyoming Statutes, 1997 Section 33-29-140 et. seq. and the Rules and Regulations of the Board of Professional Engineers and Professional Land Surveyors)

Reverse side of this form may be used if more space is needed.

Record of original survey and citation of source of historical information (if corner is lost or obliterated). Description of corner monumentation evidence found and/or monument and accessories established to perpetuate the location of this corner. Sketch of relative location of monument, accessories, and reference points with course and distance to adjacent corner(s) (if determined in this survey). Method and rationale for reestablishment of lost or obliterated corner.

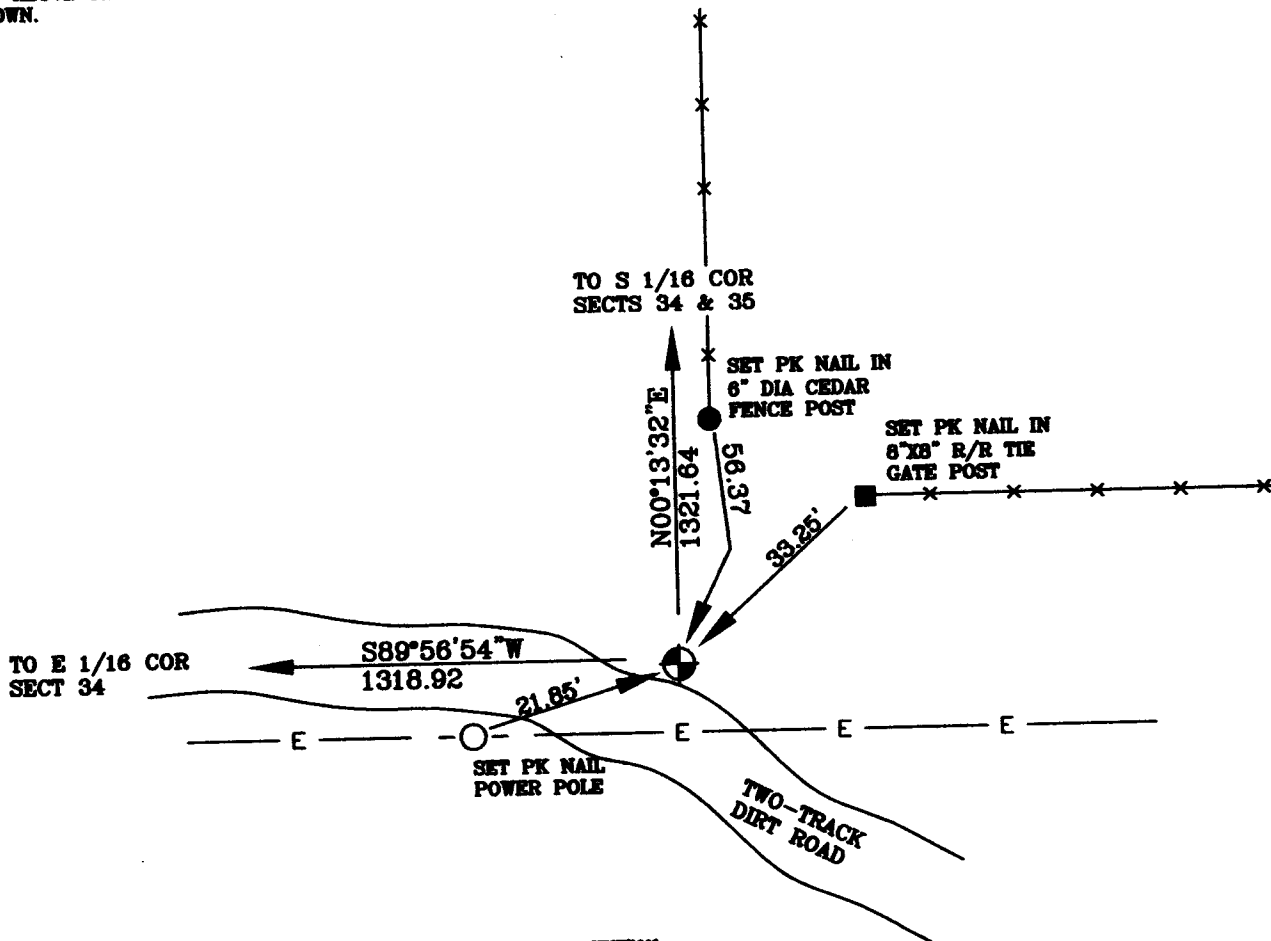
G.L.O. RECORD:

VA.16"E
4th STANDARD PARALLEL
FROM THE CORNER TO SECTIONS 33
AND 34 RAN ON A TRUE LINE ALONG
THE SOUTH BOUNDARY OF SECTION 34,
T17N., R64W. 80.00 CHAINS AND SET A
LIMESTONE 16"x10"x4" FOR THE
CORNER TO SECTIONS 34 AND 35
T17N., R64W.



AT THE CORNER:
FOUND A 3 1/4" ALUMINUM CAP SET
0.2' ABOVE THE GROUND STAMPED AS
SHOWN.

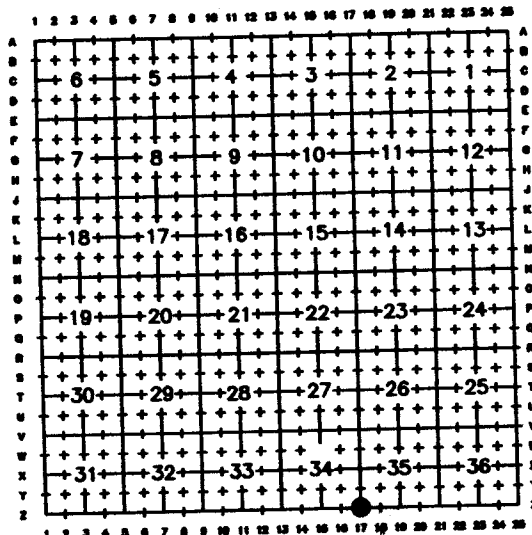
NOTE:
ALL FENCES ARE
BARBED WIRE



Date of Field Work: 10/15/06

Office Reference: HUTTON

Cross Index Plat



Firm/Agency, Address

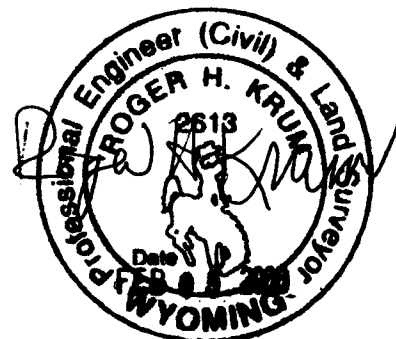
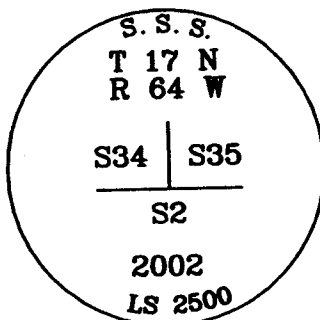
Western R&D, Ltd.
5809 Yellowstone Rd., Suite B
Cheyenne, Wyoming 82009

This corner record was prepared by me or under my direction and supervision.

SEAL & SIGNATURE

Telephone Number: (307) 632-5656

● Denotes Monument Found



Corner Name SOUTHEAST CORNER Section 34, T 17 N, R 64 W, 6th P.M.
County: LARAMIE Wyoming

Cross-Index No.: Z-17

SBRPEPLS/PLSW: March 1994; PLSW January 1998